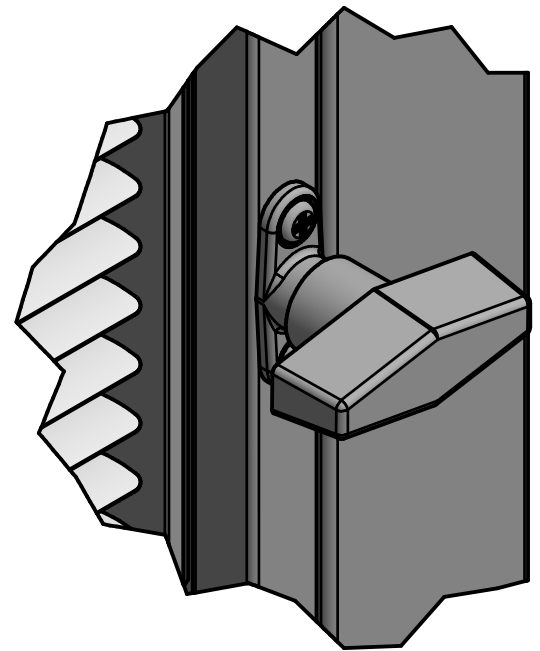


ADA COMPLIANT TILT CONTROL KNOB  
ASSEMBLY (BY KYLER INDUSTRIES) -  
LOCATION TO BE ANY WHERE ON  
VERTICAL SIDE OF FRAME - AVAILABLE IN  
SINGLE OR DUAL OPERATOR



## View of Removable Glass Stop Side of Hollow Metal Frame

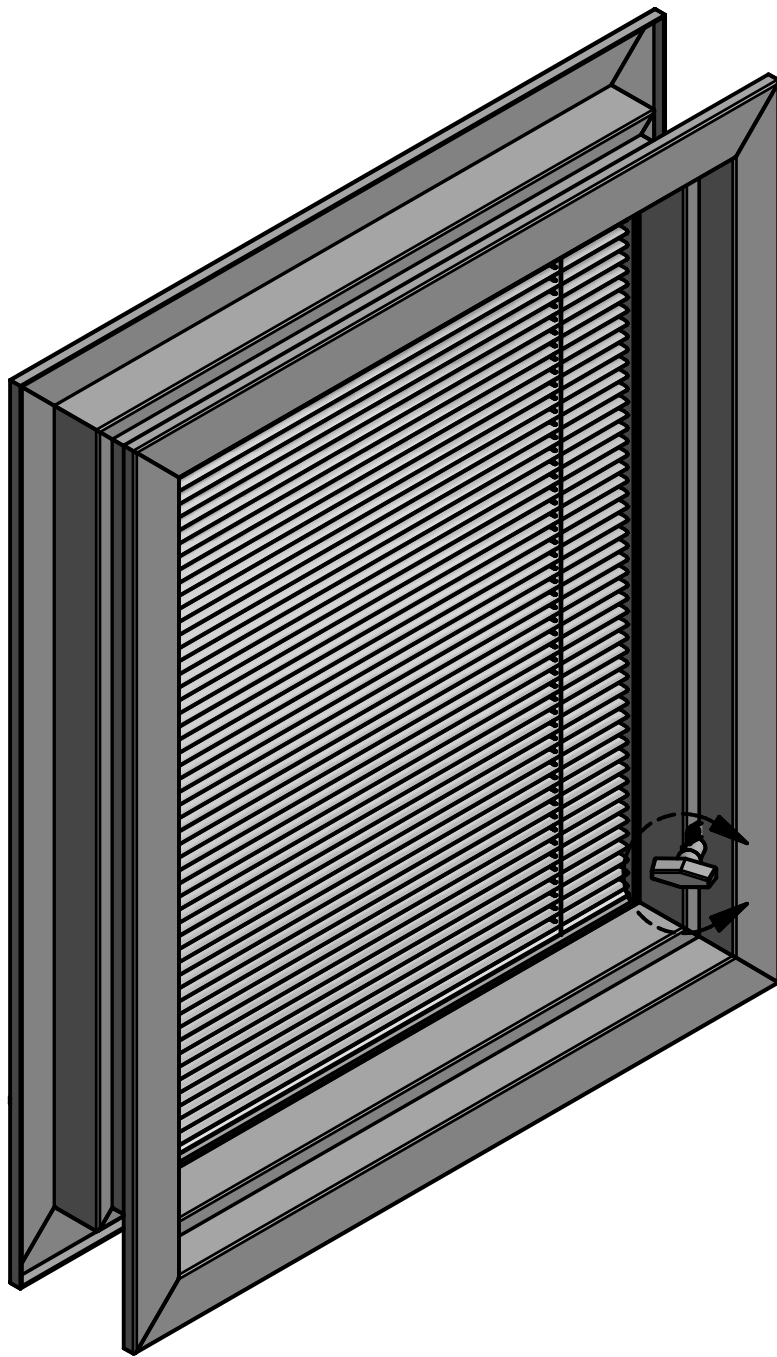
**Kyler Industries**

192 E 48th St  
Holland, MI 49423  
[www.Kyler-Industries.com](http://www.Kyler-Industries.com)

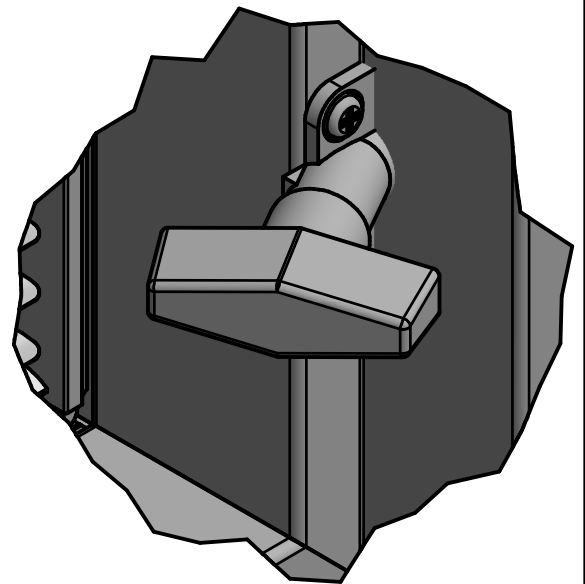
T: 616.392.1042  
F: 616.392.3778

DESCRIPTION:  
100 Series Blind; Hollow Metal; Dual ADA Compliant Knob  
Operator; Tilt Only

REV  
2/16



ADA COMPLIANT TILT CONTROL KNOB  
ASSEMBLY (BY KYLER INDUSTRIES) -  
LOCATION TO BE ANY WHERE ON  
VERTICAL SIDE OF FRAME - AVAILABLE IN  
SINGLE OR DUAL OPERATOR



## View of Fixed Glass Stop Side of Hollow Metal Frame

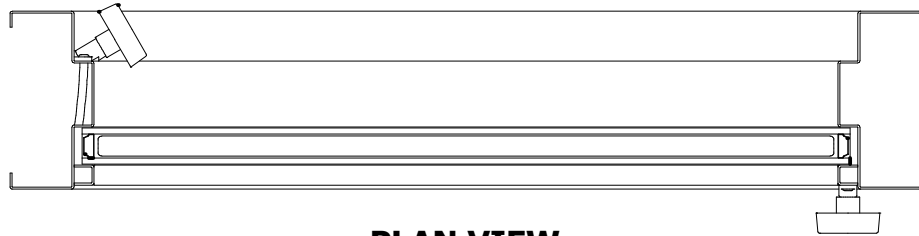
**Kyler Industries**

192 E 48th St  
Holland, MI 49423  
[www.Kyler-Industries.com](http://www.Kyler-Industries.com)

T: 616.392.1042  
F: 616.392.3778

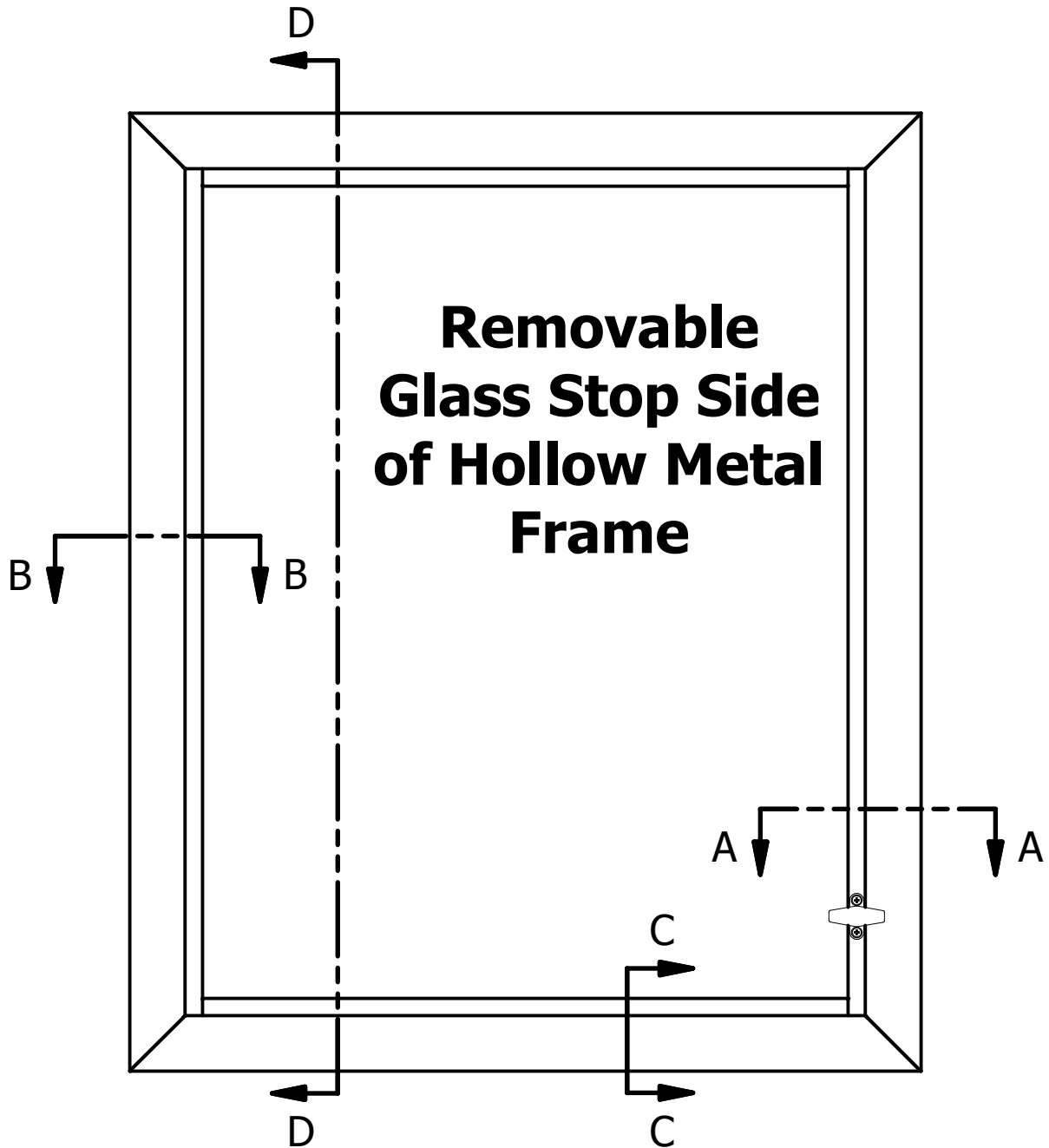
DESCRIPTION:  
100 Series Blind; Hollow Metal; Dual ADA Compliant Knob  
Operator; Tilt Only

REV  
2/16



### PLAN VIEW

TILT CONTROL KNOBS TO BE ON OPPOSITE CORNERS OF UNIT



**Kyler Industries**

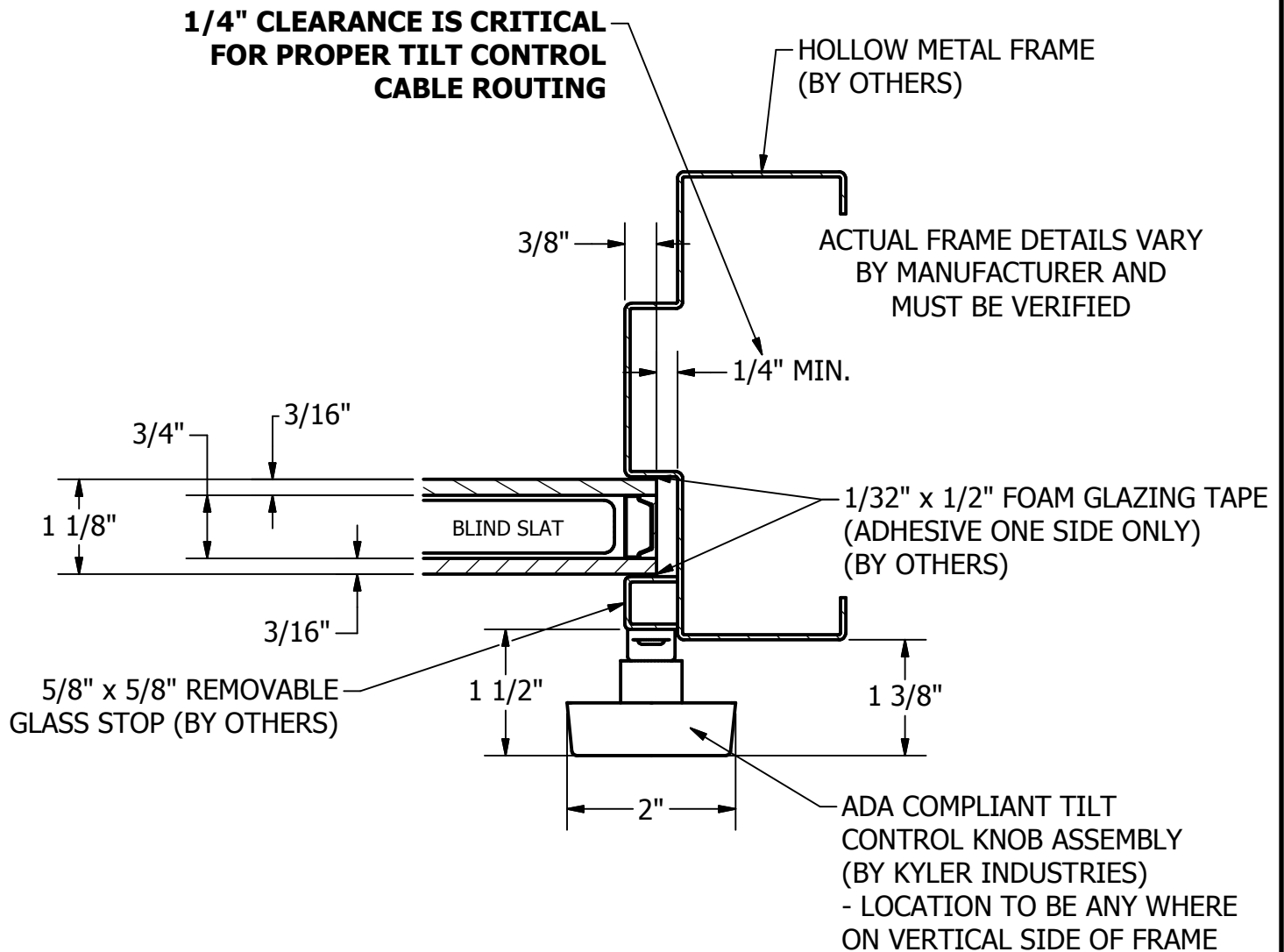
192 E 48th St  
Holland, MI 49423  
[www.Kyler-Industries.com](http://www.Kyler-Industries.com)

T: 616.392.1042  
F: 616.392.3778

DESCRIPTION:

100 Series Blind; Hollow Metal; Dual ADA Compliant Knob Operator; Tilt Only

REV  
2/16



## SECTION A-A

### JAMB DETAIL

SCALE 1/2

**Kyler Industries**

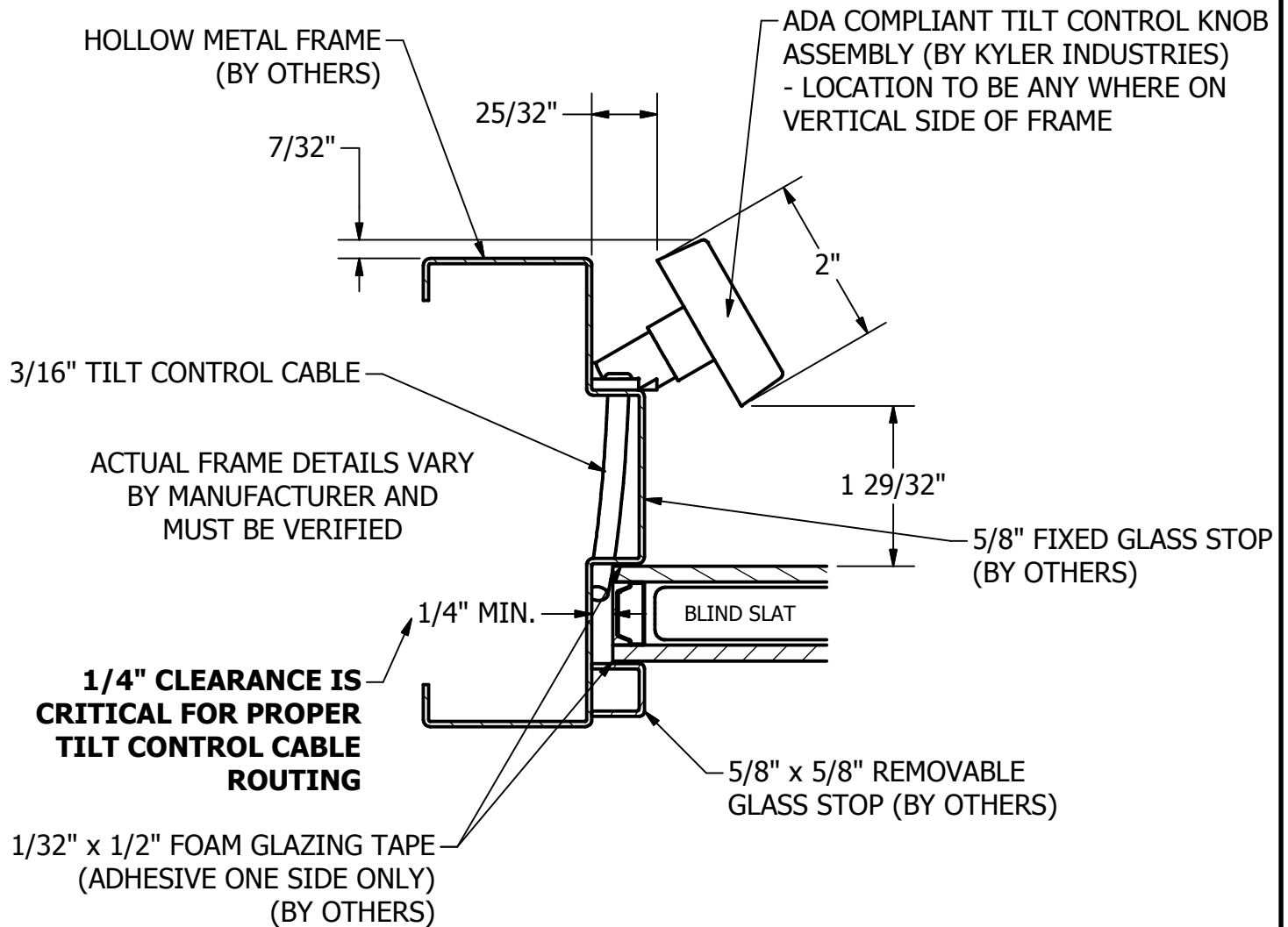
192 E 48th St  
Holland, MI 49423  
[www.Kyler-Industries.com](http://www.Kyler-Industries.com)

T: 616.392.1042  
F: 616.392.3778

**DESCRIPTION:**

100 Series Blind; Hollow Metal; Dual ADA Compliant Knob Operator; Tilt Only

REV  
2/16



## SECTION B-B

### JAMB DETAIL

SCALE 1/2

**Kyler Industries**

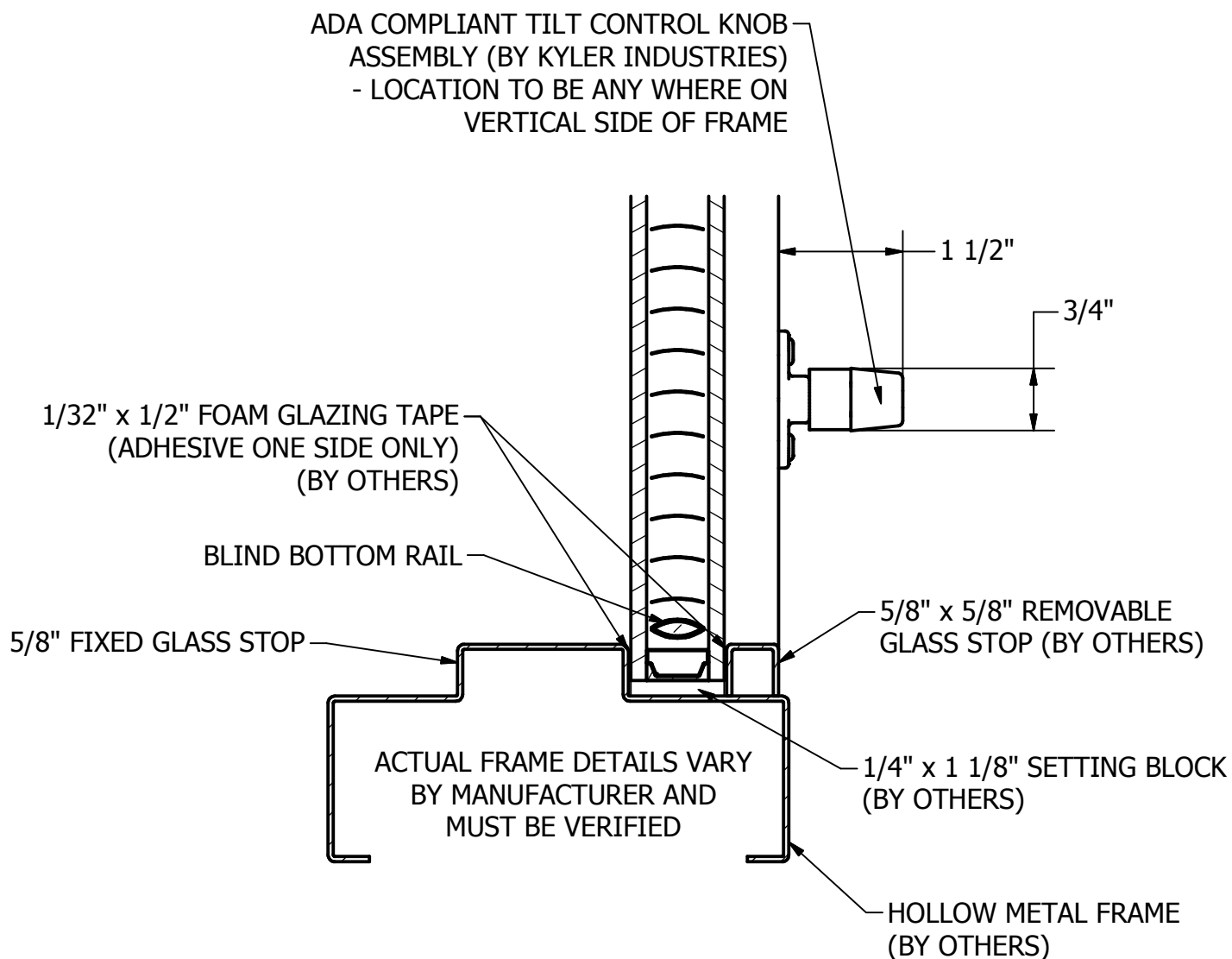
192 E 48th St  
Holland, MI 49423  
[www.Kyler-Industries.com](http://www.Kyler-Industries.com)

T: 616.392.1042  
F: 616.392.3778

DESCRIPTION:

100 Series Blind; Hollow Metal; Dual ADA Compliant Knob Operator; Tilt Only

REV  
2/16



## SECTION C-C

### SILL DETAIL

SCALE 1/2

**Kyler Industries**

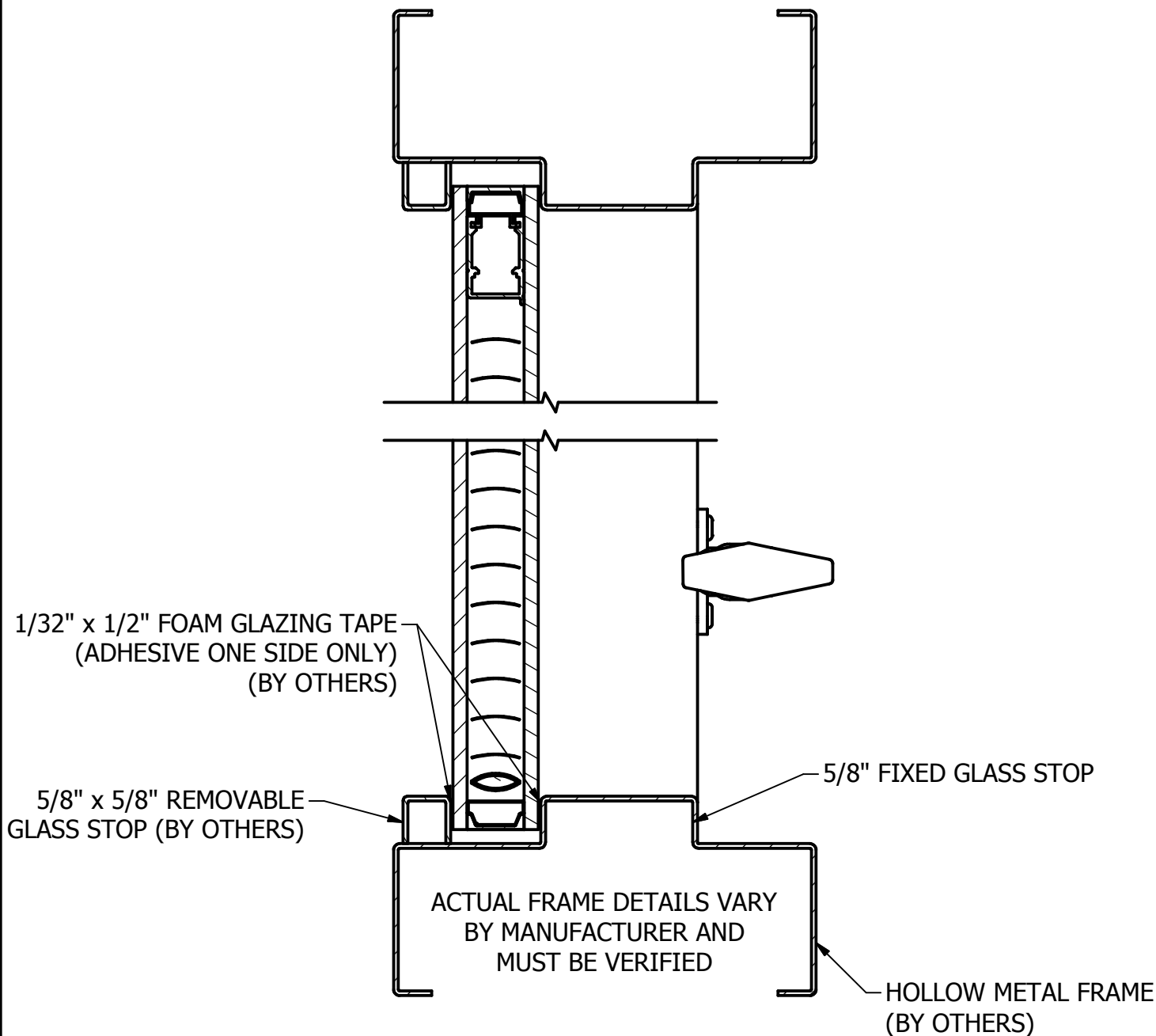
192 E 48th St  
Holland, MI 49423  
[www.Kyler-Industries.com](http://www.Kyler-Industries.com)

T: 616.392.1042  
F: 616.392.3778

DESCRIPTION:

100 Series Blind; Hollow Metal; Dual ADA Compliant Knob  
Operator; Tilt Only

REV  
2/16



## SECTION D-D

HEAD / SILL DETAIL

SCALE 1/2

**Kyler Industries**

192 E 48th St  
Holland, MI 49423  
[www.Kyler-Industries.com](http://www.Kyler-Industries.com)

T: 616.392.1042  
F: 616.392.3778

DESCRIPTION:

100 Series Blind; Hollow Metal; Dual ADA Compliant Knob  
Operator; Tilt Only

REV  
2/16