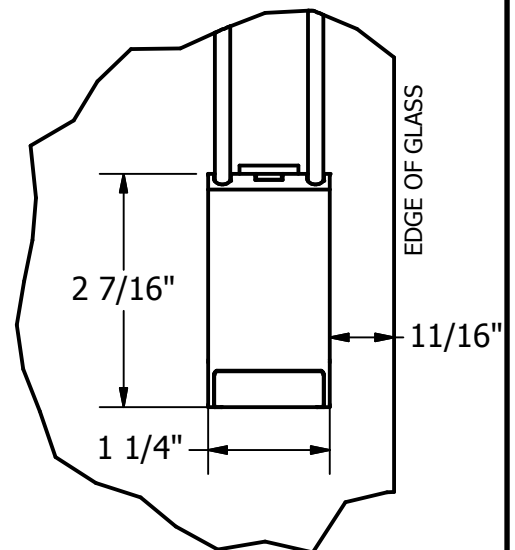


OPERATOR LOCATED IN UPPER  
LEFT OR UPPER RIGHT CORNER  
- OPERATOR CANNOT BE  
MOVED FROM THIS LOCATION



**Available in Tilt Only  
(SL20A) or Lift/Tilt (SL20C)**

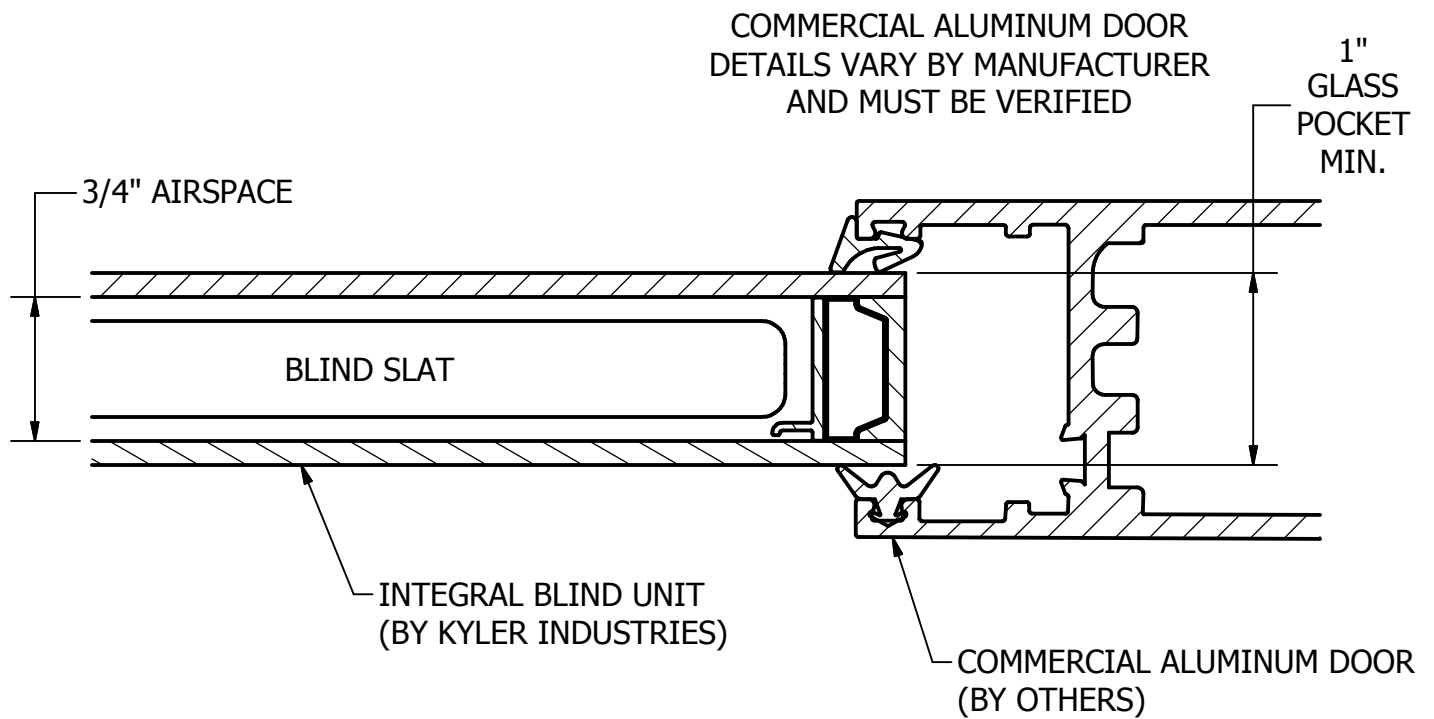
**Kyler Industries**

192 E 48th St  
Holland, MI 49423  
[www.Kyler-Industries.com](http://www.Kyler-Industries.com)

T: 616.392.1042  
F: 616.392.3778

DESCRIPTION:  
SL20 Integral Blind; Commercial Aluminum Door; Cord Loop  
Operator; Tilt Only (SL20A) or Lift/Tilt (SL20C)

REV  
2/16



## SECTION A-A

### JAMB DETAIL

SCALE 1

**Kyler Industries**

192 E 48th St  
Holland, MI 49423  
[www.Kyler-Industries.com](http://www.Kyler-Industries.com)

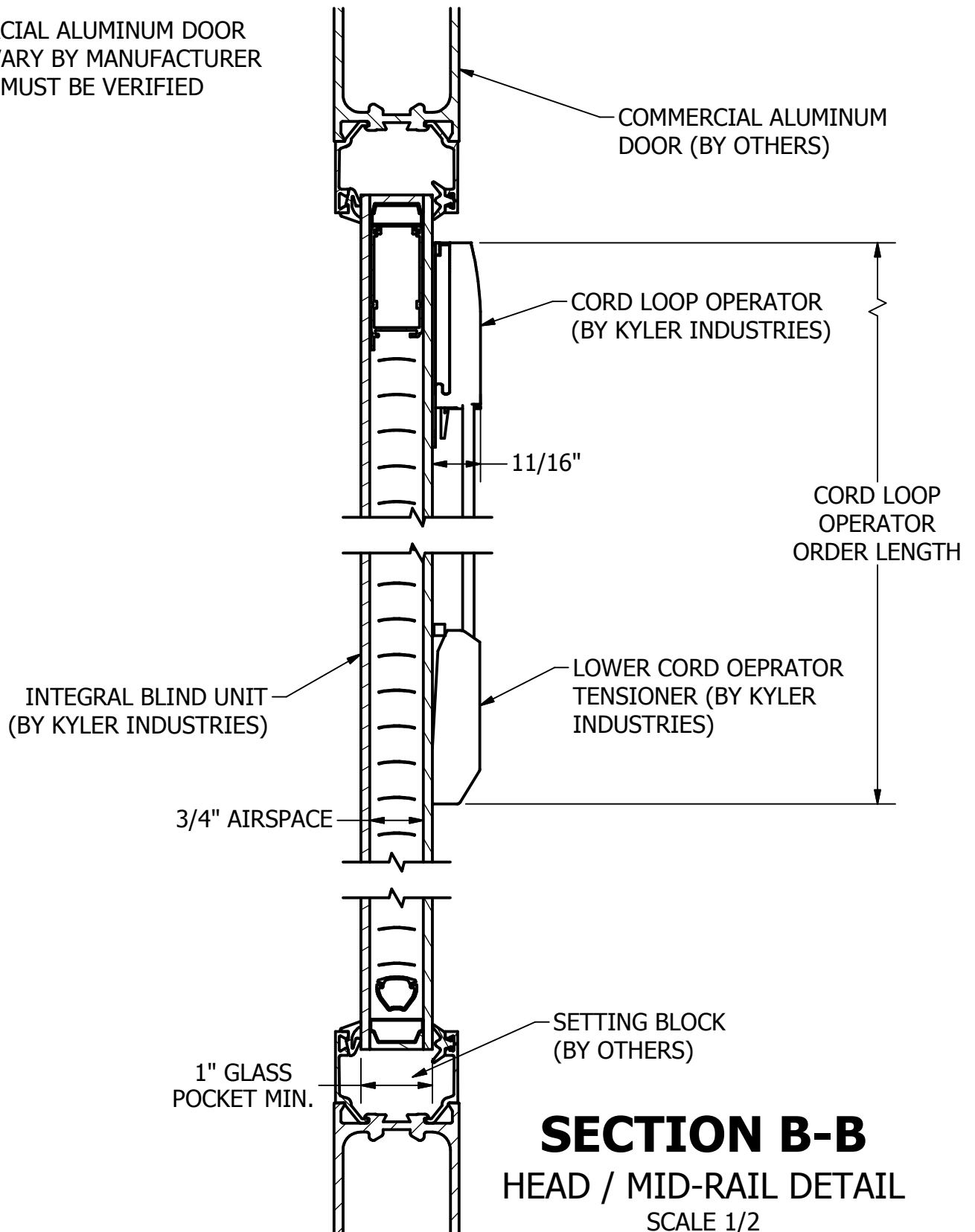
T: 616.392.1042  
F: 616.392.3778

**DESCRIPTION:**

SL20 Integral Blind; Commercial Aluminum Door; Cord Loop Operator; Tilt Only (SL20A) or Lift/Tilt (SL20C)

REV  
2/16

COMMERCIAL ALUMINUM DOOR  
DETAILS VARY BY MANUFACTURER  
AND MUST BE VERIFIED



**Kyler Industries**

192 E 48th St  
Holland, MI 49423  
[www.Kyler-Industries.com](http://www.Kyler-Industries.com)

T: 616.392.1042  
F: 616.392.3778

DESCRIPTION:

SL20 Integral Blind; Commercial Aluminum Door; Cord Loop Operator; Tilt Only (SL20A) or Lift/Tilt (SL20C)

REV  
2/16