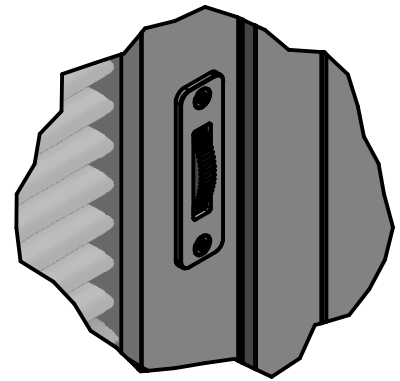
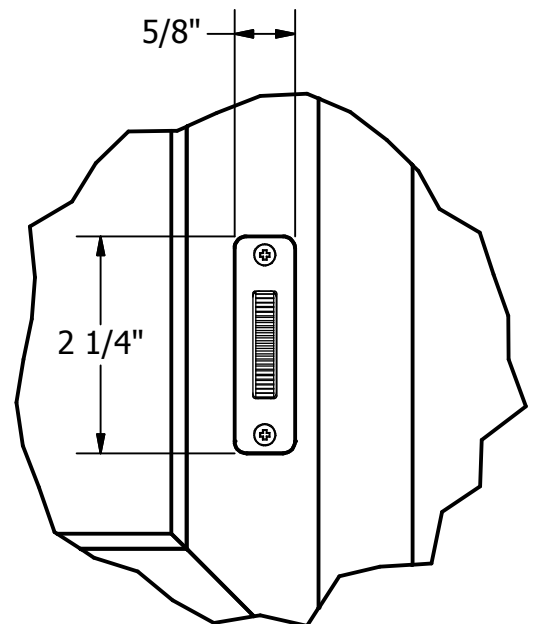


**Sani Pane Blind
System is for
Interior Use Only**



THUMB WHEEL TILT CONTROL OPERATOR
(ADA COMPLIANT) - AVAILABLE IN SINGLE
OR DUAL CONTROL



FLAT SIDE OF SANI PANE
FRAME SHOULD BE ON SIDE OF
ICU DOOR THAT HAS
REMOVABLE GLASS STOPS

Kyler Industries

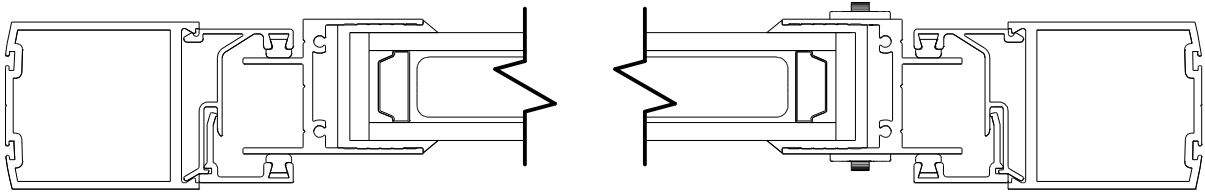
192 E 48th St
Holland, MI 49423
www.Kyler-Industries.com

T: 616.392.1042
F: 616.392.3778

DESCRIPTION:

Sani Pane; ICU Door; Thumb Wheel Operator; Tilt Only

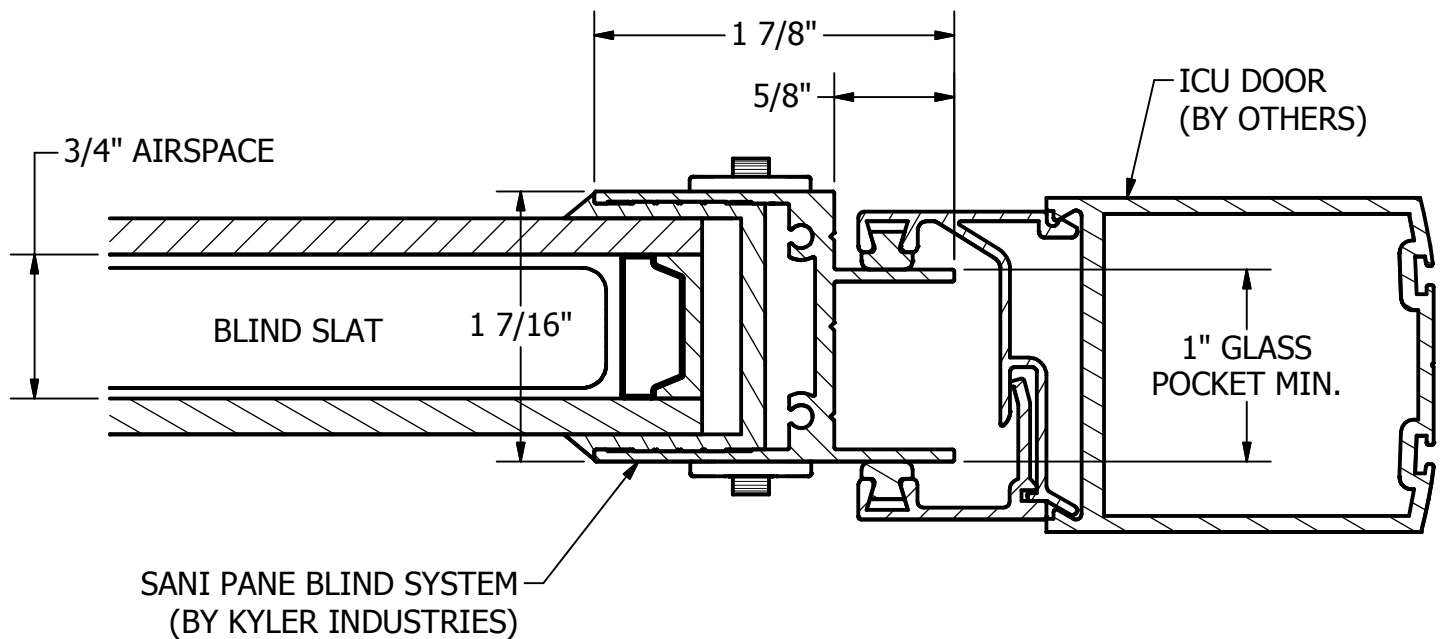
REV
2/16



PLAN VIEW

THUMB WHEEL TILT CONTROL OPERATORS ON BOTH SIDES OF UNIT

ICU DOOR DETAILS VARY
BY MANUFACTURER AND
MUST BE VERIFIED



SECTION A-A

JAMB DETAIL

SCALE 1

FLAT SIDE OF SANI PANE FRAME
SHOULD BE ON SIDE OF ICU
DOOR THAT HAS REMOVABLE
GLASS STOPS

**Sani Pane Blind
System is for
Interior Use Only**

Kyler Industries

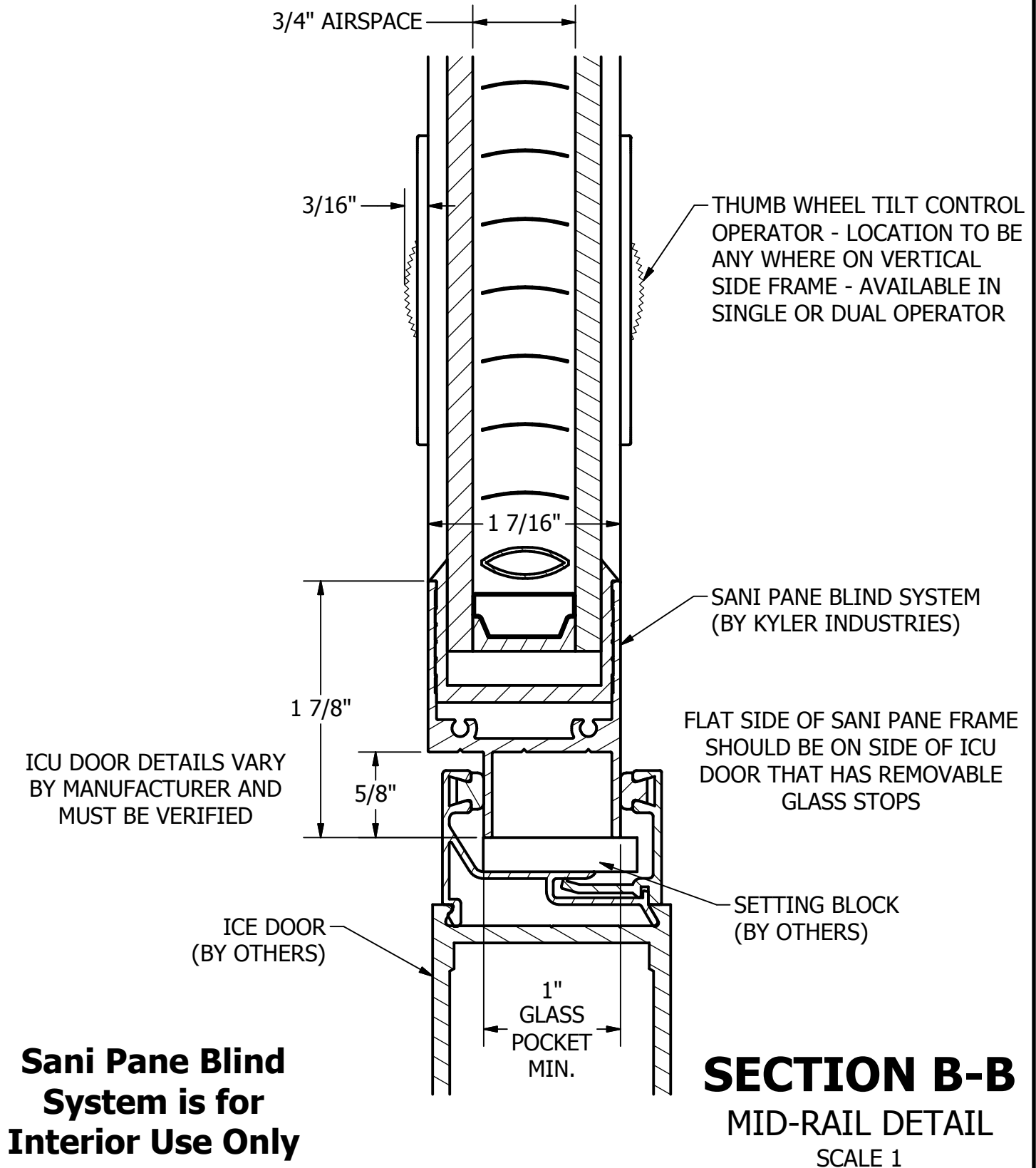
192 E 48th St
Holland, MI 49423
www.Kyler-Industries.com

T: 616.392.1042
F: 616.392.3778

DESCRIPTION:

Sani Pane; ICU Door; Thumb Wheel Operator; Tilt Only

REV
2/16



Kyler Industries

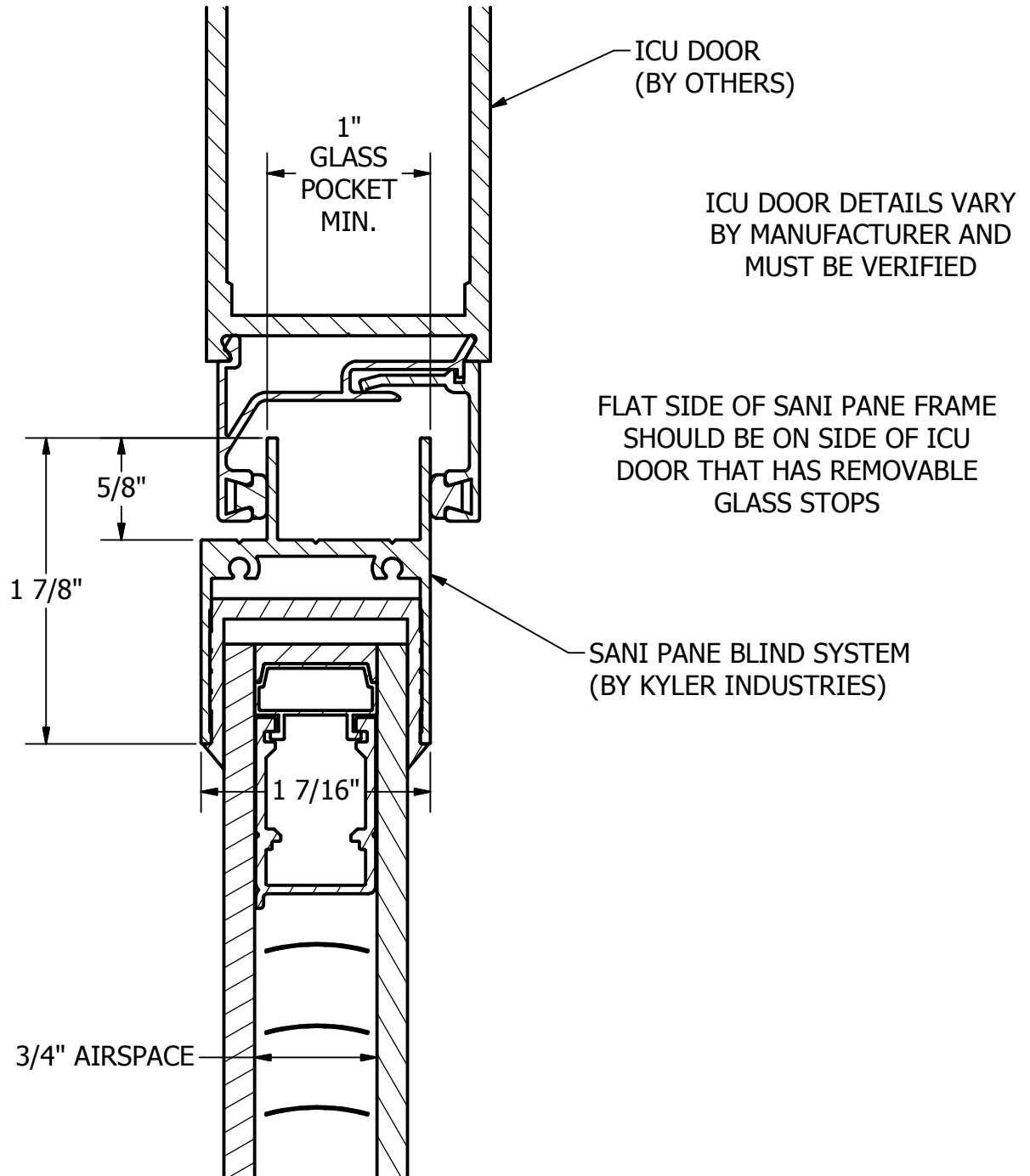
192 E 48th St
Holland, MI 49423
www.Kyler-Industries.com

T: 616.392.1042
F: 616.392.3778

DESCRIPTION:

Sani Pane; ICU Door; Thumb Wheel Operator; Tilt Only

REV
2/16



**Sani Pane Blind
System is for
Interior Use Only**

SECTION C-C

HEAD DETAIL
SCALE 1

Kyler Industries

192 E 48th St
Holland, MI 49423
www.Kyler-Industries.com

T: 616.392.1042
F: 616.392.3778

DESCRIPTION:

Sani Pane; ICU Door; Thumb Wheel Operator; Tilt Only

REV
2/16