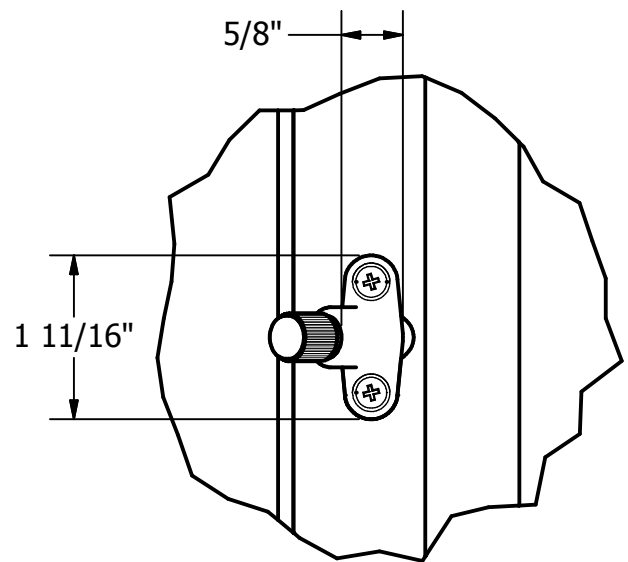


ANGLED TILT CONTROL KNOB  
OPERATOR (NOT ADA COMPLIANT) -  
AVAILABLE IN SINGLE OR DUAL  
CONTROL



FLAT SIDE OF SANI PANE  
FRAME SHOULD BE ON SIDE OF  
ICU DOOR THAT HAS  
REMOVABLE GLASS STOPS

**Sani Pane Blind  
System is for  
Interior Use Only**

**Kyler Industries**

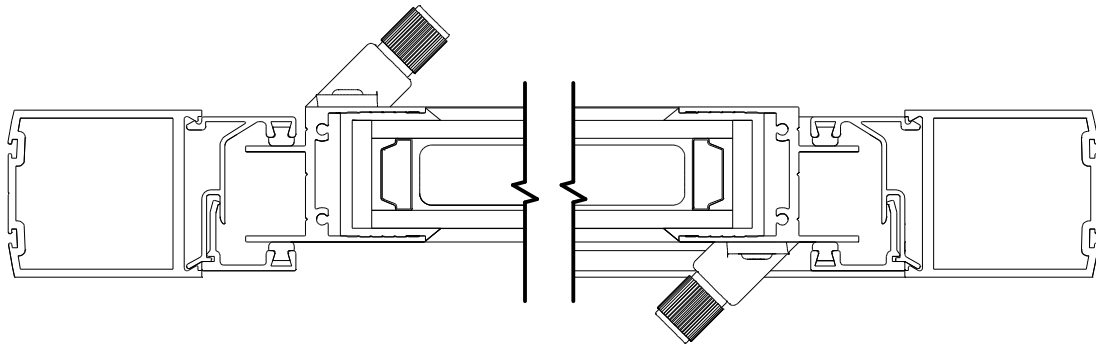
192 E 48th St  
Holland, MI 49423  
[www.Kyler-Industries.com](http://www.Kyler-Industries.com)

T: 616.392.1042  
F: 616.392.3778

DESCRIPTION:

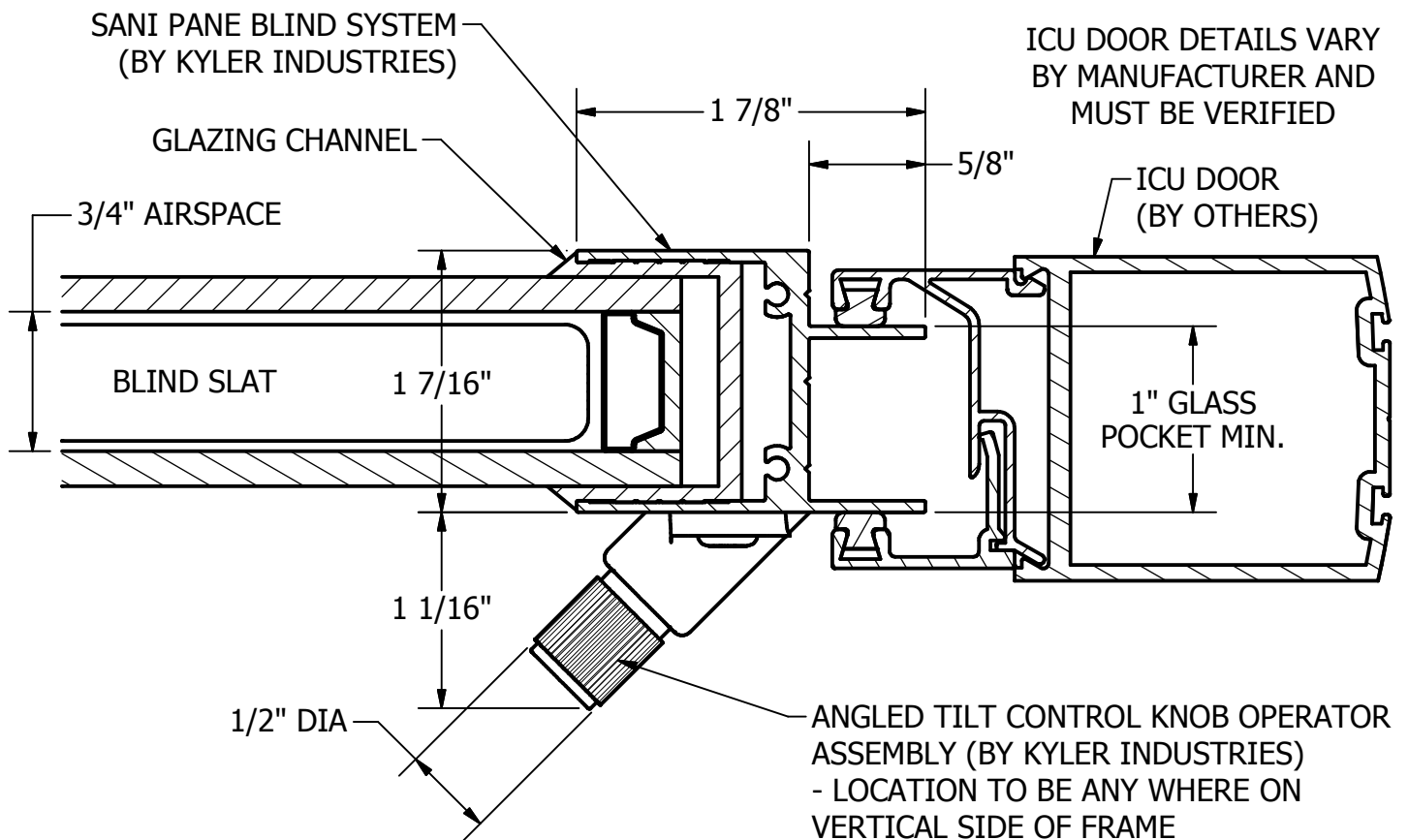
Sani Pane; ICU Door; Knob Operator; Tilt Only

REV  
2/16



## PLAN VIEW

TILT CONTROL KNOBS TO BE ON OPPOSITE CORNERS OF UNIT



## SECTION A-A

### JAMB DETAIL

SCALE 1

**Sani Pane Blind  
System is for  
Interior Use Only**

FLAT SIDE OF SANI PANE  
FRAME SHOULD BE ON SIDE OF  
ICU DOOR THAT HAS  
REMOVABLE GLASS STOPS

**Kyler Industries**

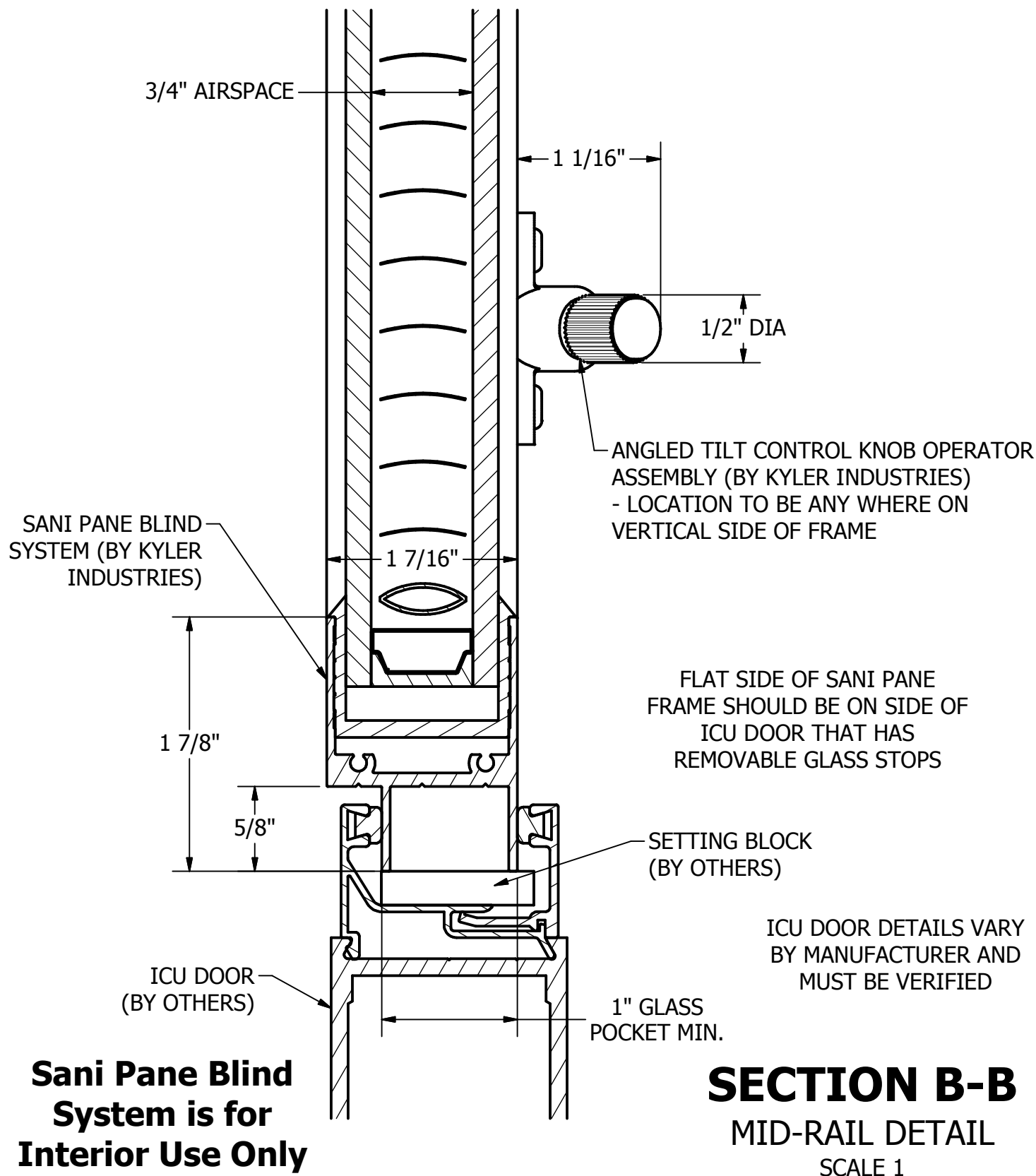
192 E 48th St  
Holland, MI 49423  
[www.Kyler-Industries.com](http://www.Kyler-Industries.com)

T: 616.392.1042  
F: 616.392.3778

DESCRIPTION:

Sani Pane; ICU Door; Knob Operator; Tilt Only

REV  
2/16



**Kyler Industries**

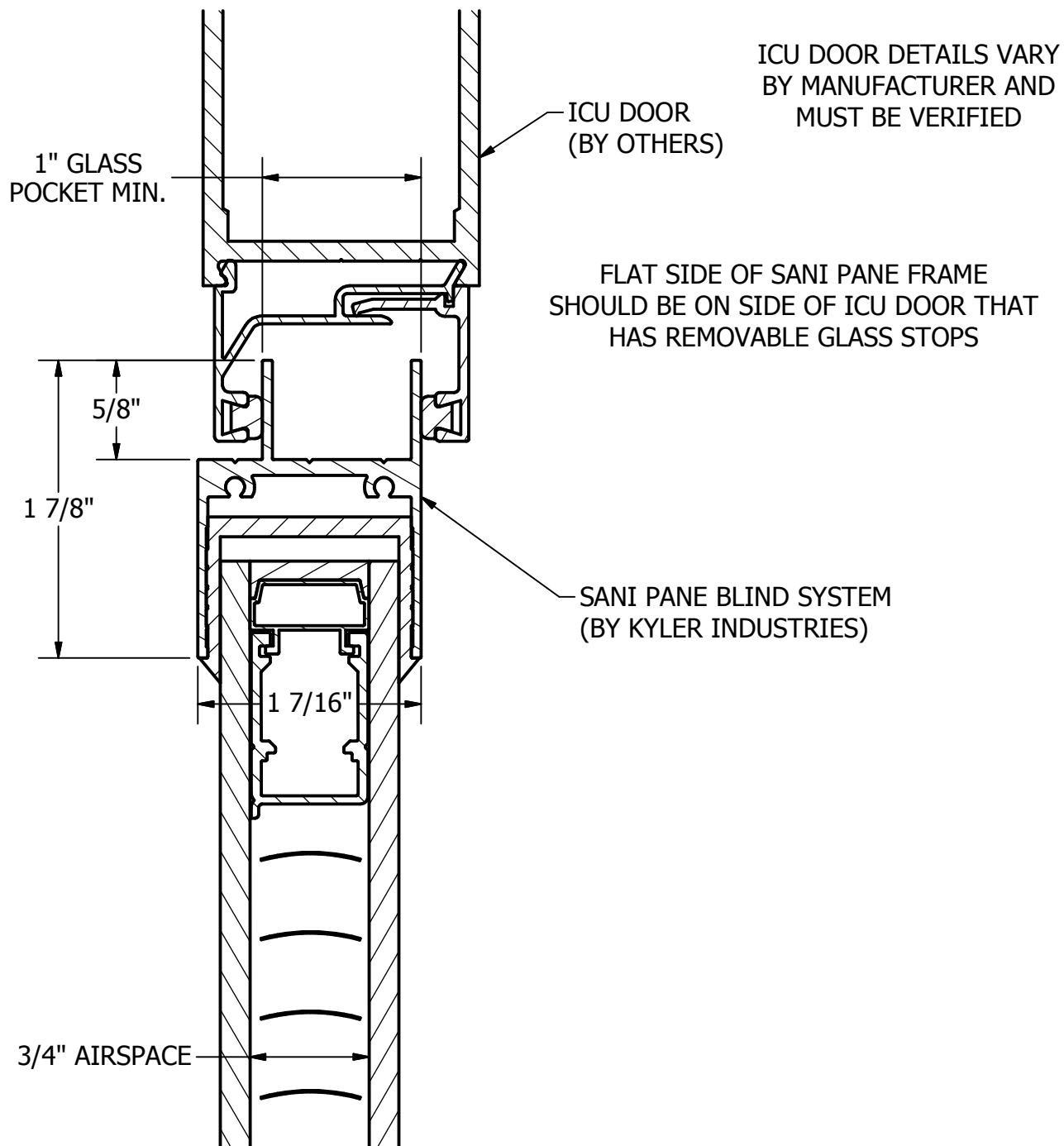
192 E 48th St  
Holland, MI 49423  
[www.Kyler-Industries.com](http://www.Kyler-Industries.com)

T: 616.392.1042  
F: 616.392.3778

DESCRIPTION:

Sani Pane; ICU Door; Knob Operator; Tilt Only

REV  
2/16



**Sani Pane Blind  
System is for  
Interior Use Only**

**SECTION C-C**  
HEAD DETAIL  
SCALE 1

**Kyler Industries**

192 E 48th St  
Holland, MI 49423  
[www.Kyler-Industries.com](http://www.Kyler-Industries.com)

T: 616.392.1042  
F: 616.392.3778

DESCRIPTION:

Sani Pane; ICU Door; Knob Operator; Tilt Only

REV  
2/16