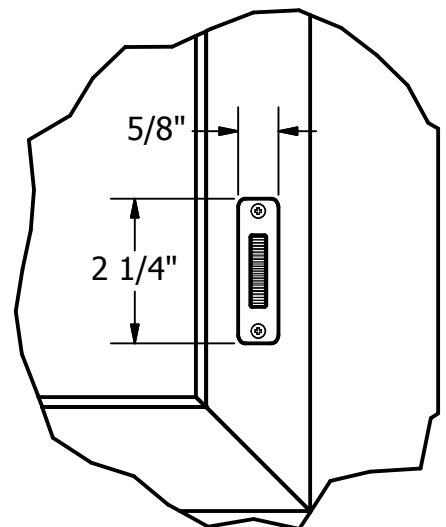


THUMB WHEEL TILT
CONTROL OPERATOR (ADA
COMPLIANT) AVAILABLE IN
SINGLE OR DUAL CONTROL



FLAT SIDE OF SANI PANE FRAME SHOULD
BE ON SIDE OF FRAMING THAT HAS
REMOVABLE GLASS STOPS

**Sani Pane Blind System
is for Interior Use Only**

Kyler Industries

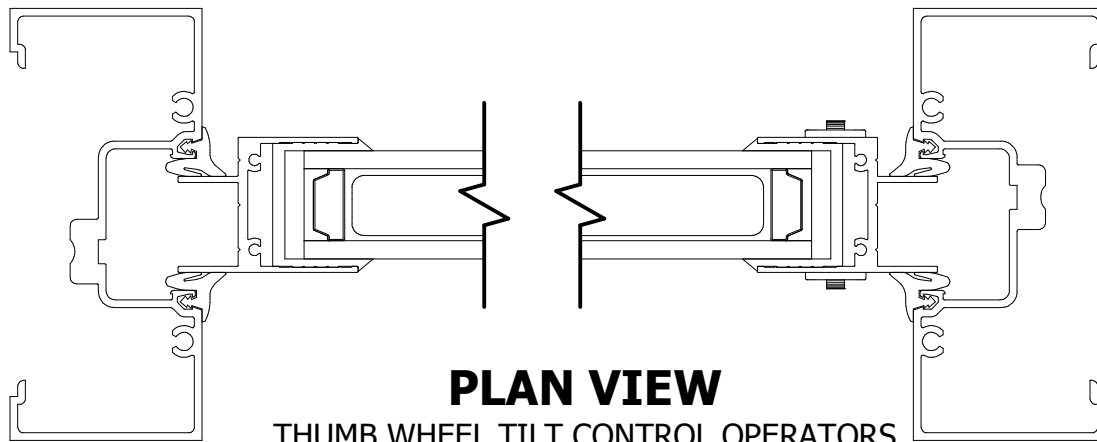
192 E 48th St
Holland, MI 49423
www.Kyler-Industries.com

T: 616.392.1042
F: 616.392.3778

DESCRIPTION:

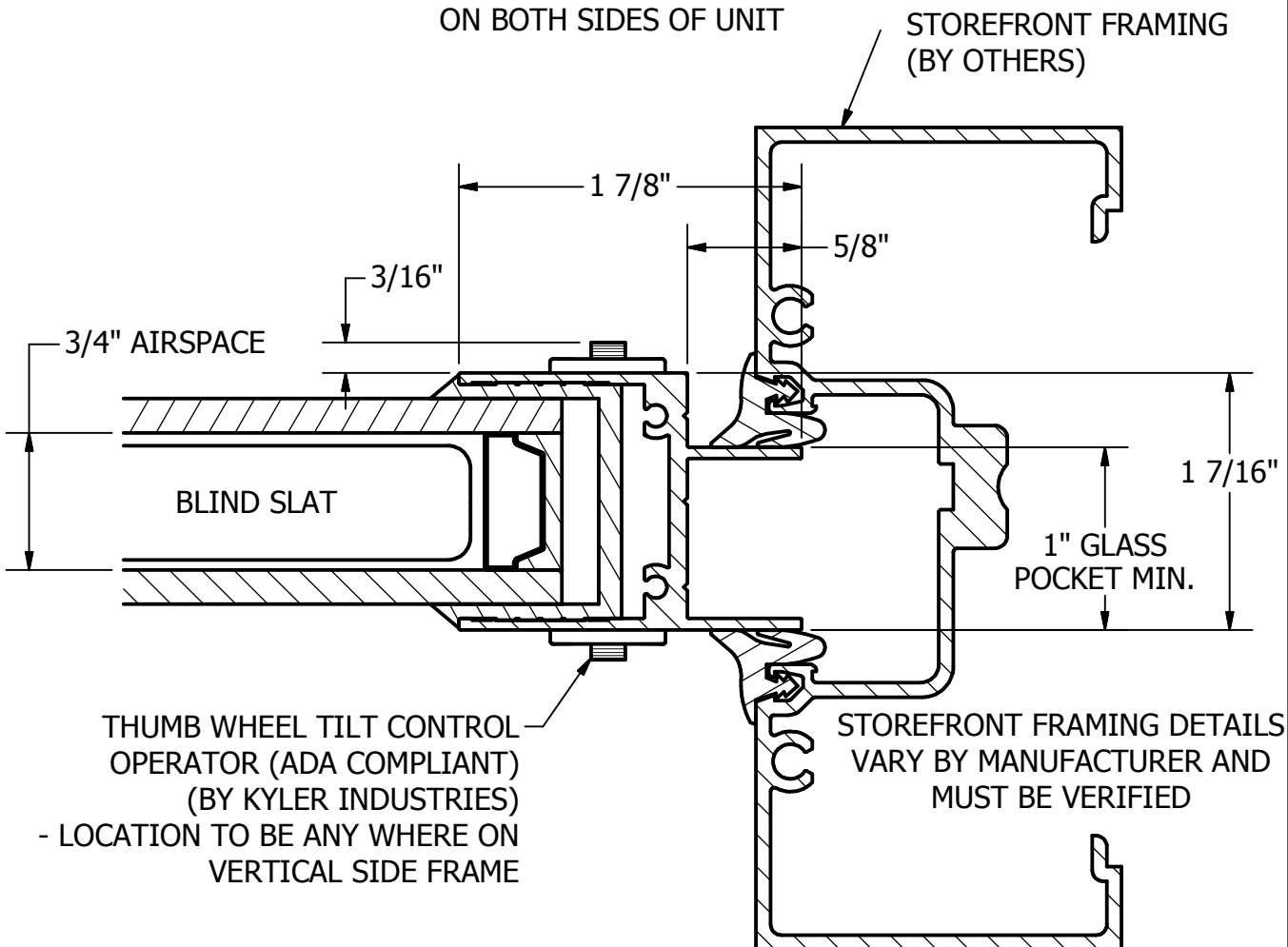
Sani Pane; Storefront Framing; Thumb Wheel Operator; Tilt
Only

REV
2/16



PLAN VIEW

THUMB WHEEL TILT CONTROL OPERATORS
ON BOTH SIDES OF UNIT



**Sani Pane Blind
System is for
Interior Use Only**

SECTION A-A

JAMB DETAIL
SCALE 1

FLAT SIDE OF SANI PANE
FRAME SHOULD BE ON SIDE OF
FRAMING THAT HAS
REMOVABLE GLASS STOPS

Kyler Industries

192 E 48th St
Holland, MI 49423
www.Kyler-Industries.com

T: 616.392.1042
F: 616.392.3778

DESCRIPTION:

Sani Pane; Storefront Framing; Thumb Wheel Operator; Tilt
Only

REV
2/16

STOREFRONT FRAMING DETAILS
VARY BY MANUFACTURER AND
MUST BE VERIFIED

STOREFRONT FRAMING
(BY OTHERS)

FLAT SIDE OF SANI PANE FRAME SHOULD
BE ON SIDE OF FRAMING THAT HAS
REMOVABLE GLASS STOPS

3/4" AIRSPACE

3/16"

THUMB WHEEL TILT CONTROL
OPERATOR (ADA COMPLIANT)
(BY KYLER INDUSTRIES)
- LOCATION TO BE ANY WHERE ON
VERTICAL SIDE FRAME

SANI PANE BLIND SYSTEM
(BY KYLER INDUSTRIES)

SETTING BLOCK
(BY OTHERS)

1 7/8"

5/8"

**Sani Pane Blind
System is for
Interior Use Only**

1" GLASS
POCKET MIN.

1 7/16"

SECTION B-B
HEAD / SILL DETAIL
SCALE 1/2

Kyler Industries

192 E 48th St
Holland, MI 49423
www.Kyler-Industries.com

T: 616.392.1042
F: 616.392.3778

DESCRIPTION:

Sani Pane; Storefront Framing; Thumb Wheel Operator; Tilt
Only

REV
2/16